

CKE2500

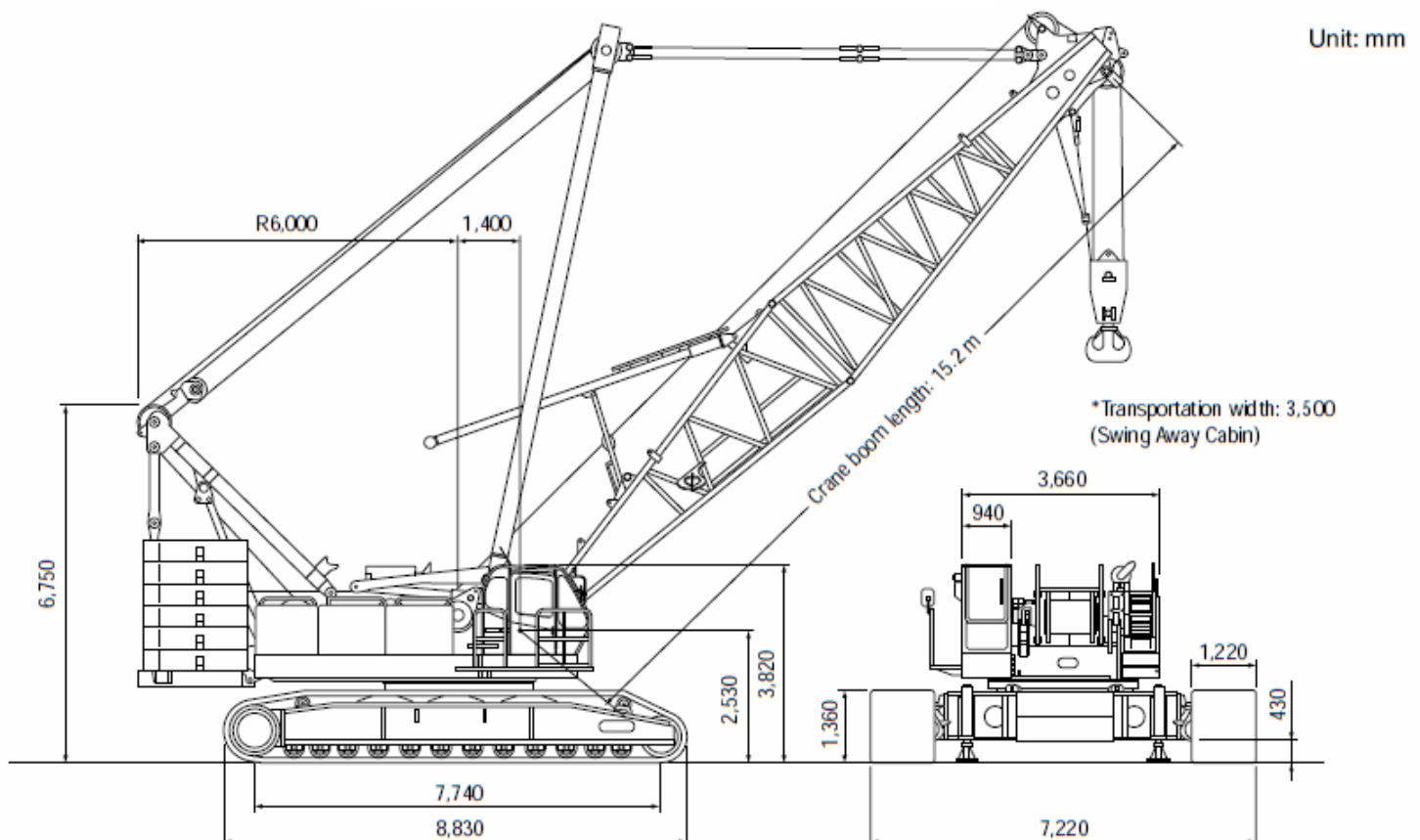
Max. Lifting Capacity: 250 t
Max. Boom Length: 91.4 m
Max. Jib Combination: 76.2 + 30.5 m
Max. Luffing Jib Combination: 51.8 + 61.0 m

S P E C I F I C A T I O N S

Main Boom	
Max. Lifting Capacity	250 t/4.0 m
Max. Length	91.4 m
Fixed Jib	
Max. Lifting Capacity	26.8 t/9.8 m
Max. Combination	76.2 m + 30.5 m
Luffing Jib	
Max. Lifting Capacity	70 t/9.8 m
Max. Combination	61.0m + 51.8 m, 51.8 m + 61.0 m
Luffing Angle	63° ~ 88°
Main & Aux. Winch	
Max. Line Speed	110 m/min (1st layer)
Rated Line Pull	132 kN (13.5 tf)
Max. Line Pull	245 kN (25 tf)
Wire Rope	25 mm
Wire Rope Length	480 m (Main) 385 m (Aux.)
Brake Type	Wet-type multiple disc brake
Free-Fall	Option

Working Speed	
Swing Speed	2.1 min ⁻¹ (rpm)
Travel Speed	1.1/0.7 km/h
Power Plant	
Model	Mitsubishi 6D24-TLU2D
Engine Output	235 kW/2,000 min ⁻¹ (rpm)
Fuel Tank Capacity	400 liters
Hydraulic System	
Main Pumps	4 variable displacement
Max. Pressure	30.9 MPa (315 kgf/cm ²)
Hydraulic Tank Capacity	550 liters
Self-Erection Device	
	Standard
Weight	
Operating Weight	Approx. 208 t
Counterweight	80.6 t (Upper), 20.0 t (Lower)
Transport Weight	44.9 t (Main machine)
Ground Pressure	95 kPa (0.97 kgf/cm ²)

GENERAL DIMENSIONS

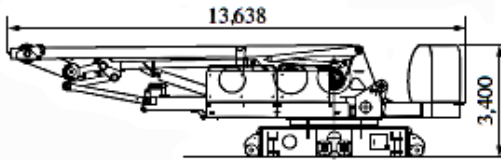


SPECIFICATIONS OF PARTS AND ATTACHMENTS

Dimensions: mm Weight: kg

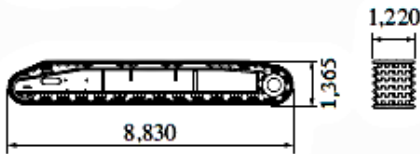
Base Machine

Weight: 44,900 kg Width: 3,500 mm



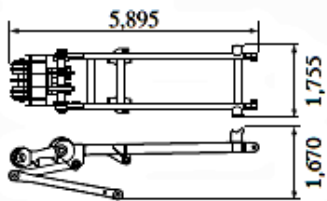
Crawler

Weight: 23,500 kg



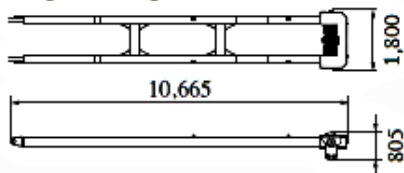
Gantry

Weight: 2,920 kg



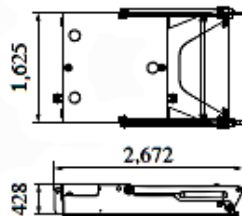
Mast

Weight: 2,970 kg



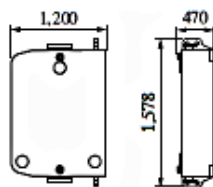
Carbodyweight A

Weight: 4,375 kg x 2 pieces



Carbodyweight B

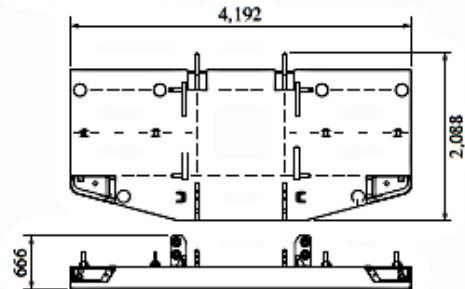
Weight: 5,625 kg x 2 pieces



Counterweight Type 1

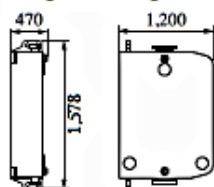
Counterweight A

Weight: 12,500 kg



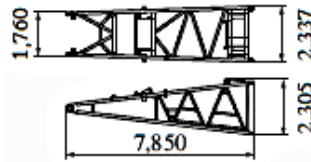
Counterweight B, C

Weight: 5,625 kg x 6 x 2 pieces



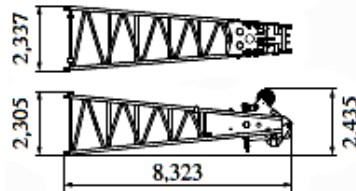
Boom Base

Weight: 3,250 kg

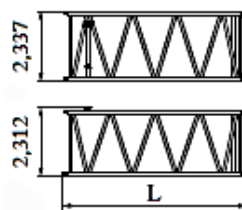


Boom Top

Weight: 3,138 kg (with guy cables)



Insert Boom



	L (mm)	Weight (kg)*
3.0m	3,175	776
6.1m	6,223	1,292
12.2m	12,320	2,243

*with guy cables

Jib Base with Strut (For Crane)

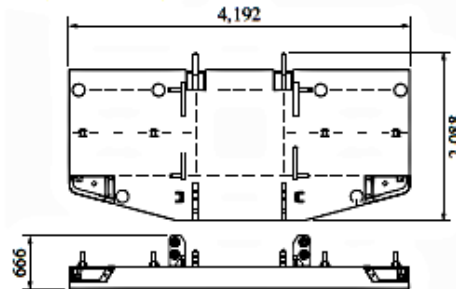
Weight: 510 kg Width: 1,040 mm



Counterweight Type 2

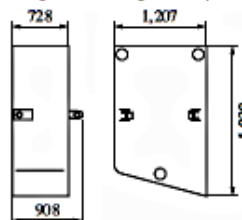
Counterweight A

Weight: 12,506 kg



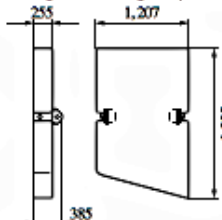
Counterweight B, C

Weight: 10,000 kg x 3 x 2 pieces



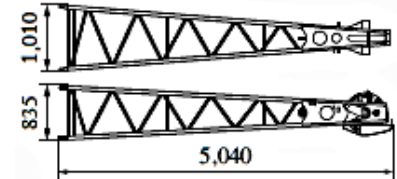
Counterweight D, E

Weight: 3,750 kg x 2 pieces



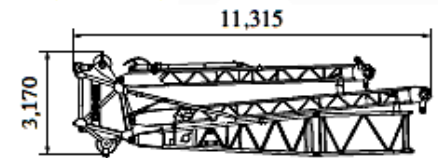
Jib Top (For Crane)

Weight: 315 kg



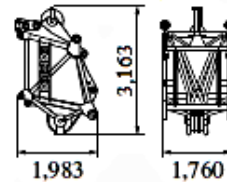
Travel Kit Assembly

Weight: 6,000 kg



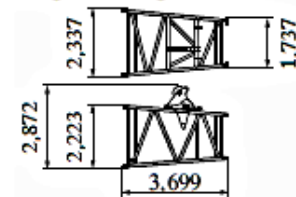
Luffing Main Boom Top

Weight: 1,890 kg



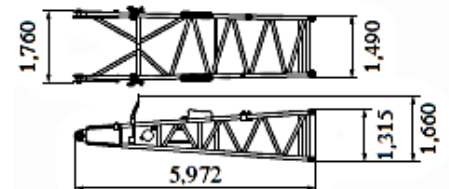
Luffing Taper Insert Boom

Weight: 1,030 kg



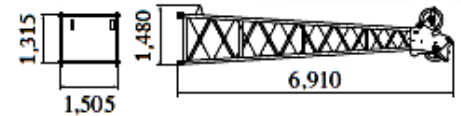
Luffing Jib Base

Weight: 1,140 kg



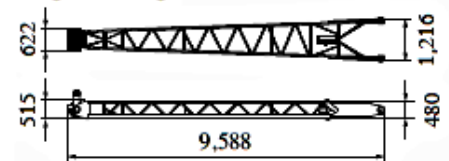
Luffing Jib Top

Weight: 1,170 kg



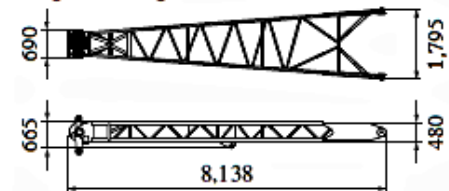
Front Strut (Luffing Jib)

Weight: 1,160 kg



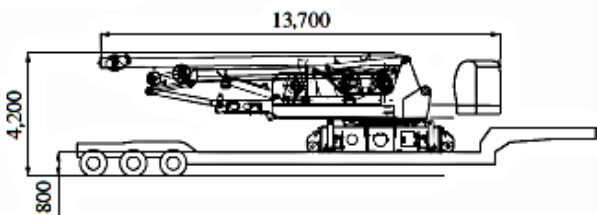
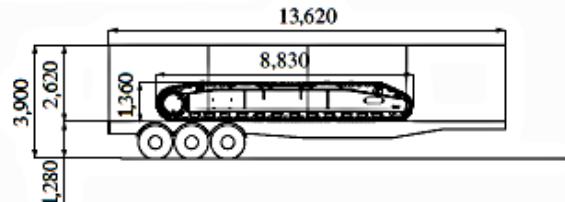
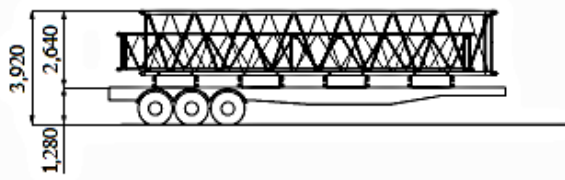
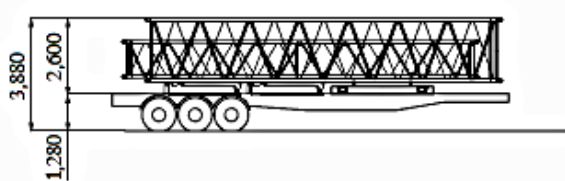
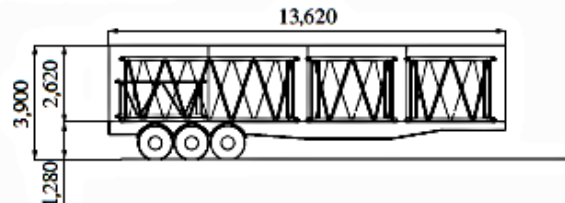
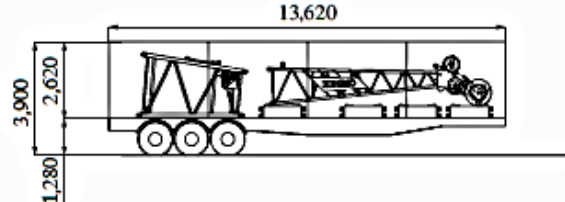
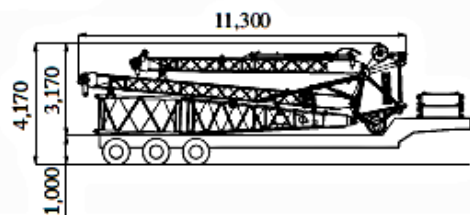
Rear Strut (Luffing Jib)

Weight: 1,130 kg



TRANSPORTATION PLAN

(Main Boom 61.0 m + Luffing Jib 51.8 m, Counterweight: Type 1)

Configuration	Description	Total Weight
<p>No.1 Low Loader</p> 	<p>Base Machine = Including 3rd winch Translifter All wire ropes</p>	<p>44.90 ton</p>
<p>No.2 & No.3 Tent Side Truck</p> 	<p>Crawler =</p>	<p>23.50 ton</p>
<p>No.4 & No.5 Flat Bed Trailer</p> 	<p>Counterweight (4 x 5.63 ton) = 40 ft Main Boom x 1 = 40 ft Luffing Jib x 1 = Total =</p>	<p>22.52 ton 2.24 ton 0.96 ton <hr/>25.72 ton</p>
<p>No.6 Flat Bed Trailer</p> 	<p>Counterweight A x 1 = 40 ft Main Boom x 1 = 20 ft Luffing Jib (2 x 0.54 ton) = Carbodyweight A (2 x 4.38 ton) = Total =</p>	<p>12.89 ton 2.24 ton 1.08 ton 8.76 ton <hr/>24.97 ton</p>
<p>No.7 Tent Side Truck</p> 	<p>10 ft Main Boom (2 x 0.74 ton) = 20 ft Main Boom x 1 = 10 ft Luffing Jib Insert x 1 = Total =</p>	<p>1.48 ton 1.29 ton 0.31 ton <hr/>3.08 ton</p>
<p>No.8 Tent Side Truck</p> 	<p>Luffing Jib Top x 1 = Luffing Taper x 1 = Counterweight (4 x 5.63 ton) = Total =</p>	<p>1.17 ton 1.03 ton 22.52 ton <hr/>24.72 ton</p>
<p>No.9 Semi Loader</p> 	<p>Travel Kit = Carbodyweight B (2 x 5.63 ton) = Total =</p>	<p>6.00 ton 11.26 ton <hr/>17.26 ton</p>

Note: This transport plan depends on your specification of trailer and the areas or countries where you transport.